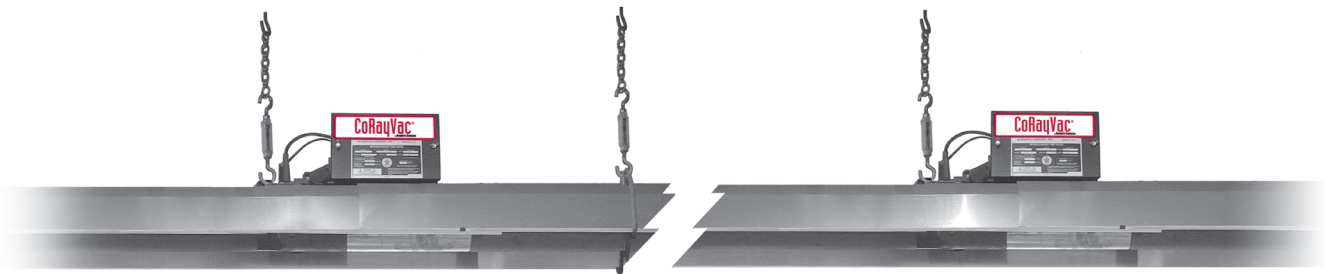


CoRayVac[®]

Low-Intensity Continuous Infrared Heating System

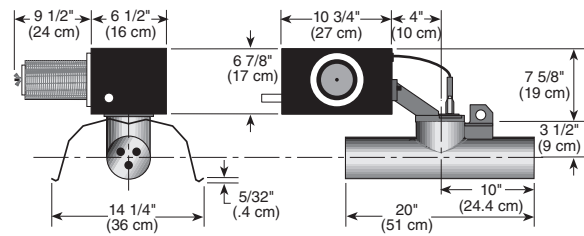


- Variety of design options from custom engineered system
- Fuel savings and enhanced user comfort provided by burners-in-series design
- Excellent efficiency and ideal combustion from zero regulator incorporated in state of the art burner design
- Maximizes usable space with low clearances to combustibles
- Extra safety feature with zero regulator design
- Reduced building penetrations as a result of multiple burners per pump
- Environmentally friendly - meets stringent emission standards

**CUT ENERGY
BILLS BY UP TO
50%**
WITH ROBERTS GORDON[®]
www.rg-inc.com

Quality in Any Language[™]





CORAYVAC®

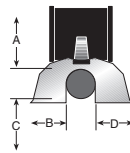
Model		B-2	B-4	B-6	B-8	B-9	B-10	B-12A	B-12
Burners in a Branch*	max.	6	4	4	4	2	4	4	4
Radiant Tube Length Between Burners	[ft]								
	min.	10	12.5	20	20	25	30	35	35
	Recommended	15	20	25	30	30	40	50	50
	max.	20	25	35	45	50	60	70	70
Input (Btu/h) x (1000)		20	40	60	80	90	100	110	120
Inlet Pressure	[in wc] NG min.	4.5							
	LPG Propane min.	10.5							
	NG & LPG Propane max.	14							
Gas Connection	NPT	1/2"							
Fuel		NG or LPG Propane; B2 and B12A - NG Only; B12 - LPG Only							
Electrical Supply**		120 V, 60 Hz, 0.3 A (Connection Cord with Three-Prong Molded Plug)							
Burner Head		Cast Iron							
Combustion Chamber		16 Gauge Hot Rolled, Heat-Treated Aluminized, or Cast Iron							
Heat Exchanger Tubing	Radiant Tailpipe	4" dia, 16 Gauge Hot Rolled, Aluminized, Heat-Treated Aluminized, or 4" Schedule 40 Pipe							
	dia	4" or 6" dia, 16 Gauge Aluminized, Heat-Treated Aluminized							
Exhaust Flue	dia	4" or 6"							
Reflector and End Caps		.024 Aluminum [Optional - .024 Stainless Steel Type 304]							
Control System		Fully Automatic, Three-Try, 100% Shut-Off, Direct Spark Electronic Ignition Control							
Approved As		Indoor (Vented)							
Certification		ANSI Z83.20/CSA 2.34, 2.17							
Burner Weight	[lb]	19							
Warranty		Three-Year Limited (Refer to Installation, Operation and Service Manual for Details)							

*Pump type, system layout and environmental conditions may reduce maximum allowable burners in a branch. Refer to the CORAYVAC® Design Manual for complete design requirements or contact your ROBERTS GORDON® North American independent distributor for further assistance.

**Refer to Pump Spec Sheet for complete system electrical requirements.

Clearances to Combustibles *[in]**

Model		B-2	B-4	B-6	B-8	B-9	B-10	B-12A	B-12
Horizontal	A	4	4	4	4	4	4	4	4
	B	20	20	20	20	36	36	36	36
	C	48	48	48	48	60	60	60	60
	D	20	20	20	20	36	36	36	36



***Clearances B, C and D can be reduced by 50% for locations 25 ft (7 m) or more downstream of the burner. For other mounting options and associated clearances, complete installation, operation and service criteria, please see the current issue of the Installation, Operation and Service Manual.

Installation Code and Annual Inspections:

All installations and service of ROBERTS GORDON® equipment must be performed by a contractor qualified in the installation and service of equipment sold and supplied by Roberts-Gordon and conform to all requirements set forth in the ROBERTS GORDON® manuals and all applicable governmental authorities pertaining to the installation, service and operation of the equipment. To help facilitate optimum performance and safety, Roberts-Gordon recommends that a qualified contractor annually inspect your ROBERTS GORDON® equipment and perform service where necessary, using only replacement parts sold and supplied by Roberts-Gordon.

Further Information: Applications, engineering and detailed guidance on systems design, installation and equipment performance is available through ROBERTS GORDON® representatives. Please contact us for any further information you may require, including the Installation, Operation and Service Manual.

This product is not for residential use.

This document is intended to assist licensed professionals in the exercise of their professional judgement.

Roberts-Gordon, LLC
 1250 William Street
 P.O. Box 44
 Buffalo, NY 14240-0044 USA
 Telephone: 716.852.4400
 Fax: 716.852.0854
 Toll Free: 800.828.7450
www.rg-inc.com

European Office:
 Roberts-Gordon Europe Limited
 Telephone: +44(0)121 506 7700
 Fax: +44(0)121 506 7701